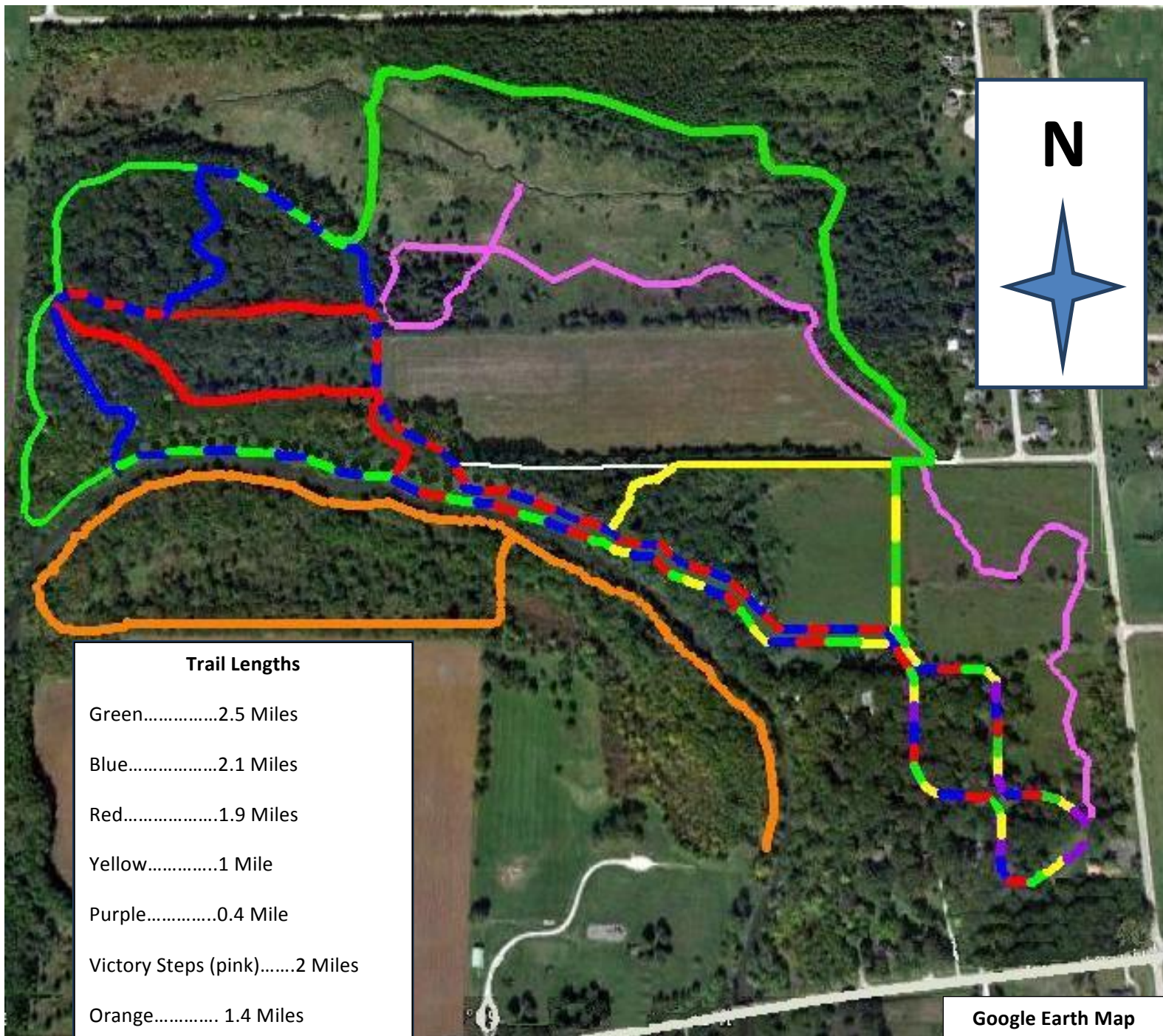


SKARE PARK TRAILS



Skare Park features 7 trails, with six of these trails located North and East of Kyte River. Each of these trails on the NE side of Kyte River begins and ends at the Skare homestead. The purple, blue, red, green, and yellow trails start out together but then separate as the trails progress, later coming back together for the return trip. These trails travel through the pines, prairie, and the wooded areas of Skare Park. Furthermore, all but the purple trail traces part of Kyte River, offering diverse views of the park. Additionally, the Victory Steps trail begins near the Skare homestead, meandering through a restored prairie then looping through whispering pines before circling back to the homestead. The 7th trail situated within Skare Park is located on the South and West side of Kyte River. This trail begins east of the pavilion near the water's edge, traveling along wetlands, while tracing the path of the river until reaching the western border of the park. During this westerly route keep your eyes open for various wildlife including kingfishers, great blue herons, and the occasional stray golf ball. After reaching the western edge of the park, this trail curves around and wraps back on itself until reaching its end by the river where it began.